

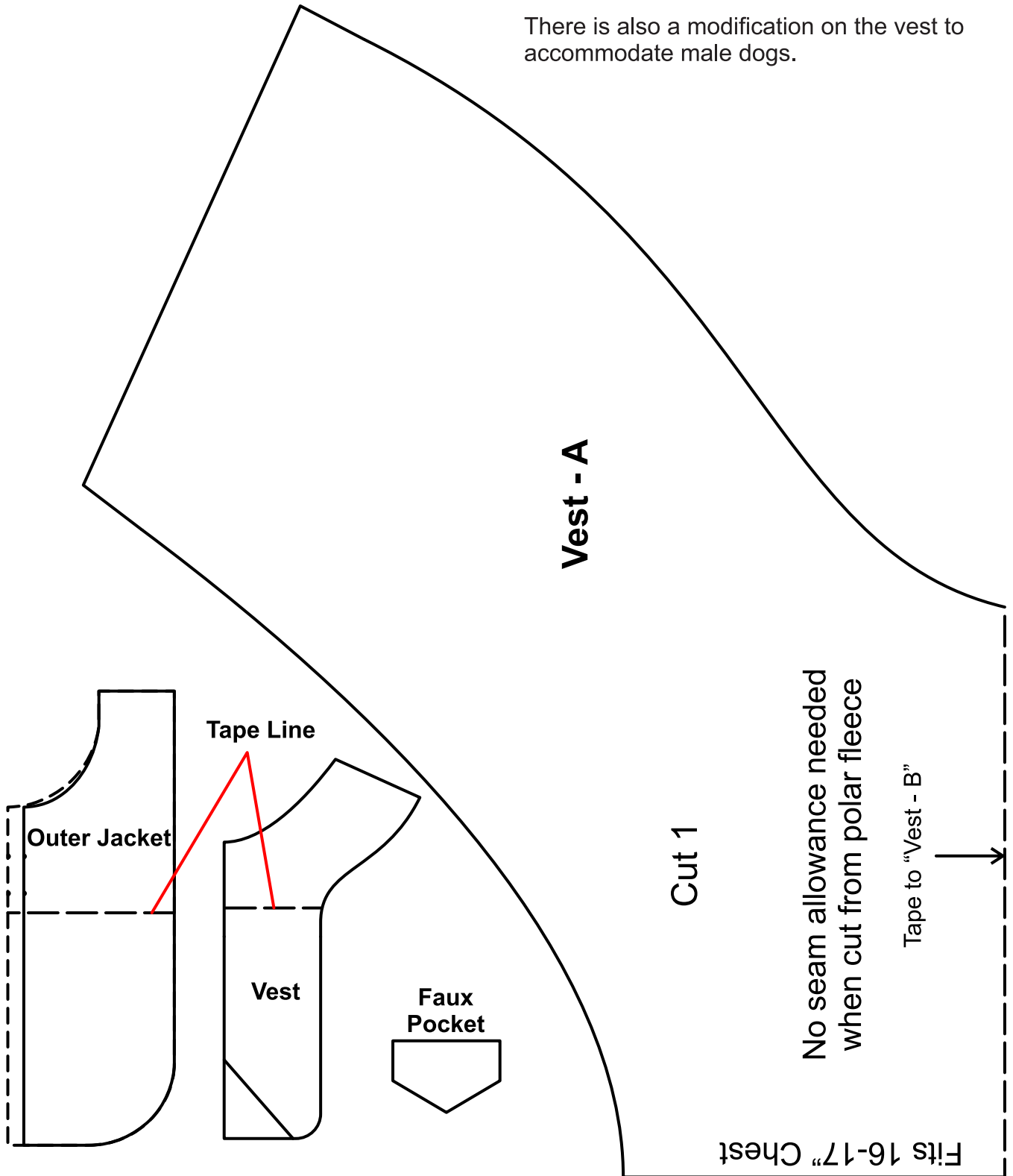
ⓘ Make sure this PDF is printed to "actual size"!
Failure to do so will cause your pattern pieces to print too small!

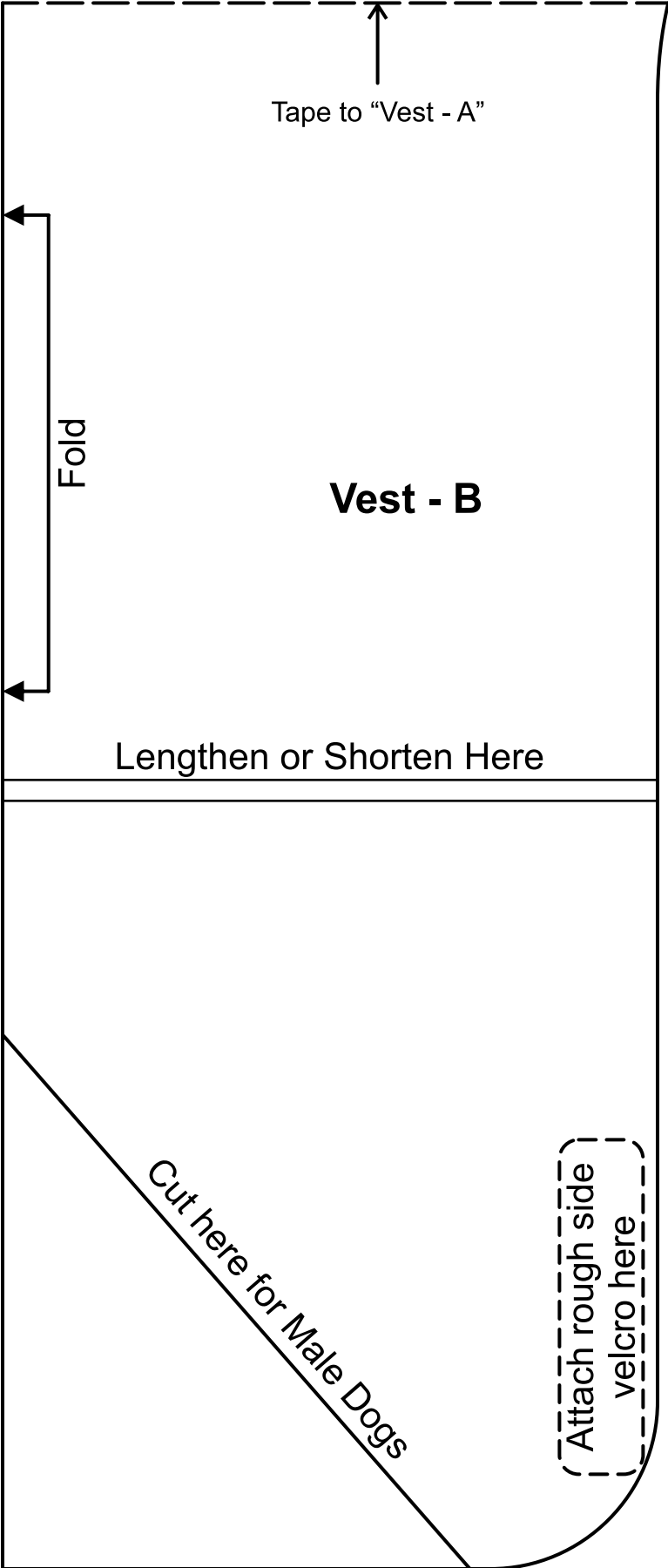
Notes:

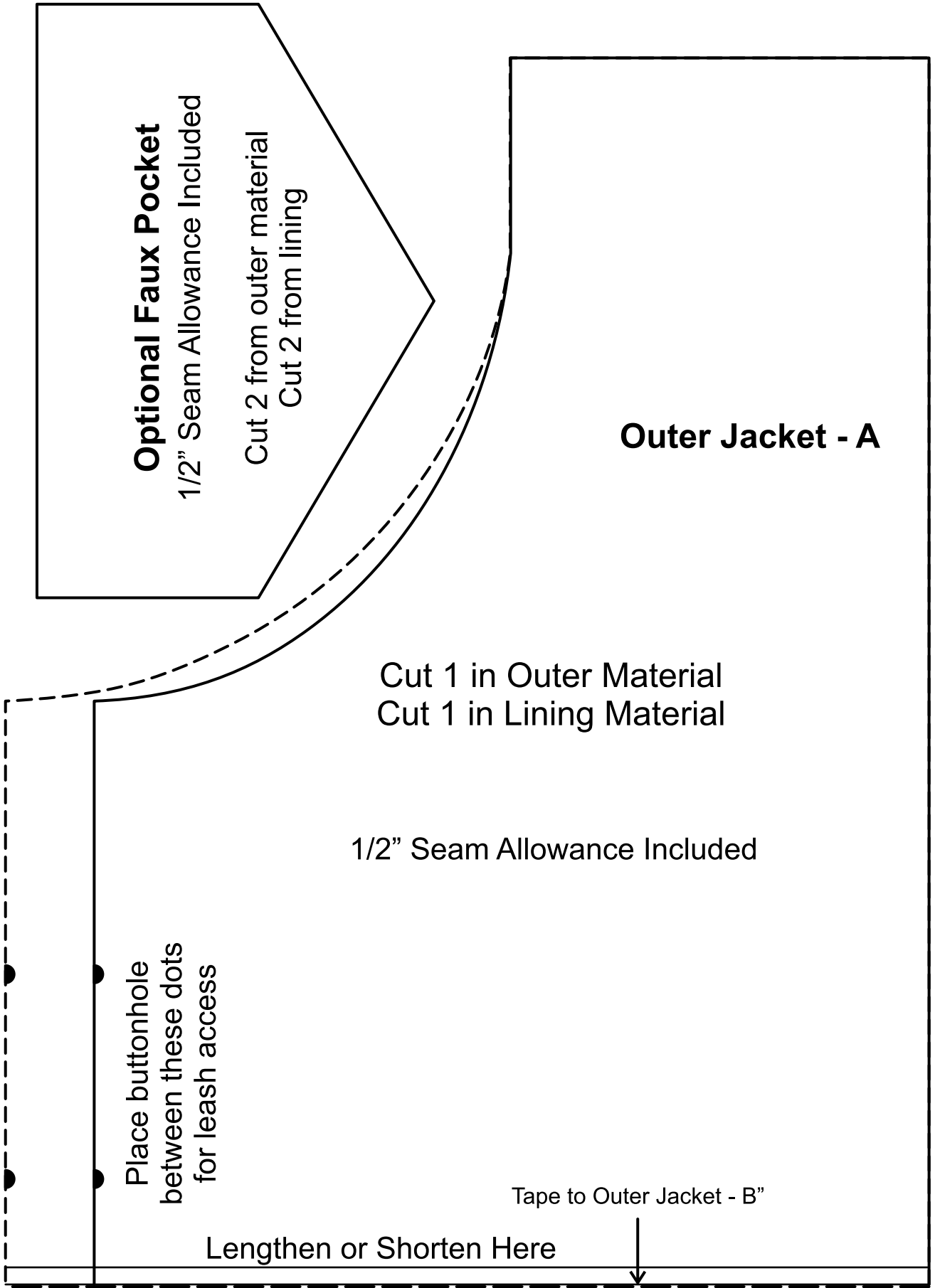
A 1/2" seam allowance has been added to the outer jacket and pocket, but NOT the vest.
As long as polar fleece is used for the vest, you will not need to finish those edges.

This pattern will fit a 16-17" chest. There are two variations of the outer jacket for 16" and 17".

There is also a modification on the vest to accommodate male dogs.







Optional Faux Pocket

1/2" Seam Allowance Included

Cut 2 from outer material

Cut 2 from lining

Outer Jacket - A

Cut 1 in Outer Material
Cut 1 in Lining Material

1/2" Seam Allowance Included

Place buttonhole
between these dots
for leash access

Tape to Outer Jacket - B"

Lengthen or Shorten Here

Fits 17" Chest

Fits 16" Chest

Fold

Fold

Faux Pocket Placement

Tape to Outer Jacket - A"

Outer Jacket - B

Attach soft side velcro here

