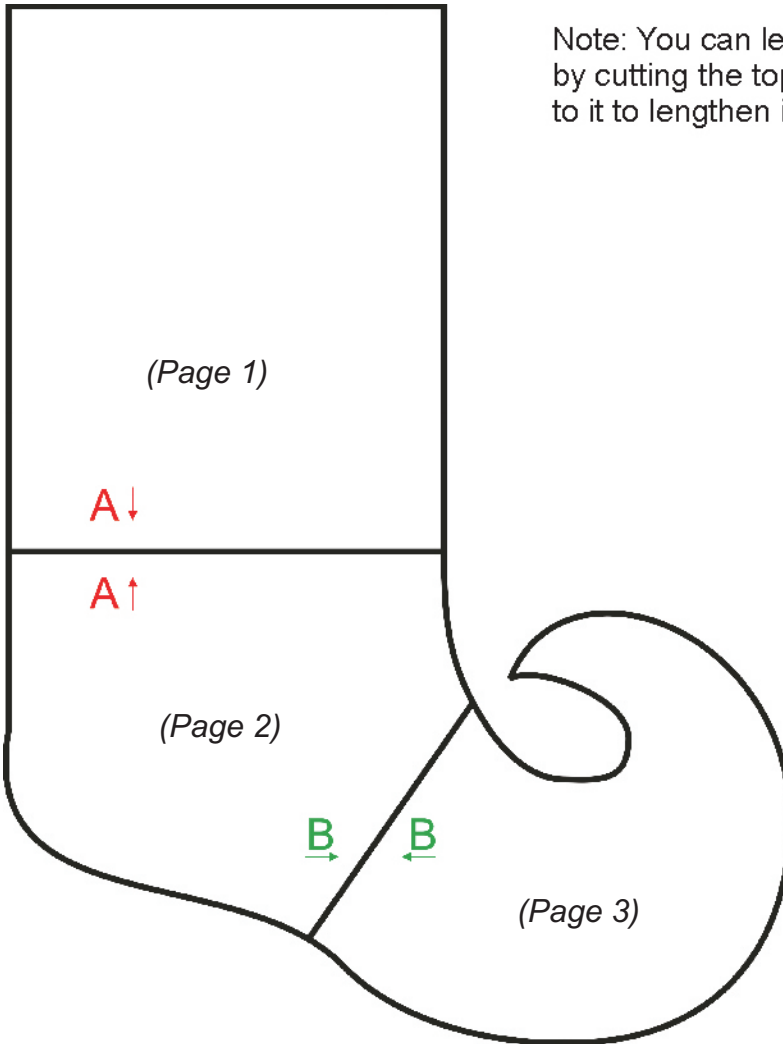


Elf Stocking

Directions:

This pattern is formatted to be printed on letter size paper.

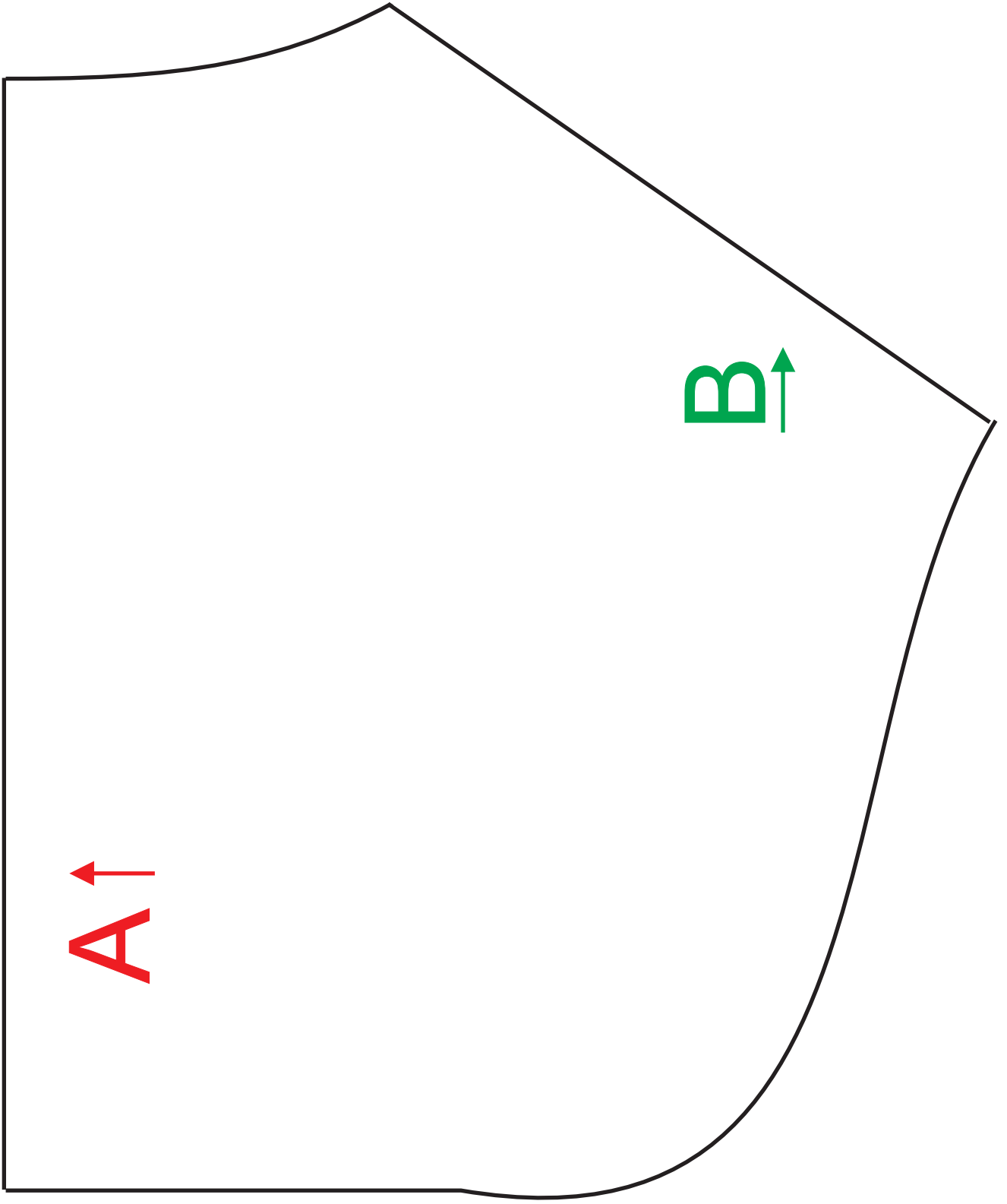
To assemble the pattern, cut out each piece and tape it together, matching the "A" lines together and the "B" lines together. Your pattern will look like this:



Note: You can lengthen or shorten your pattern by cutting the top piece shorter or adding paper to it to lengthen it.

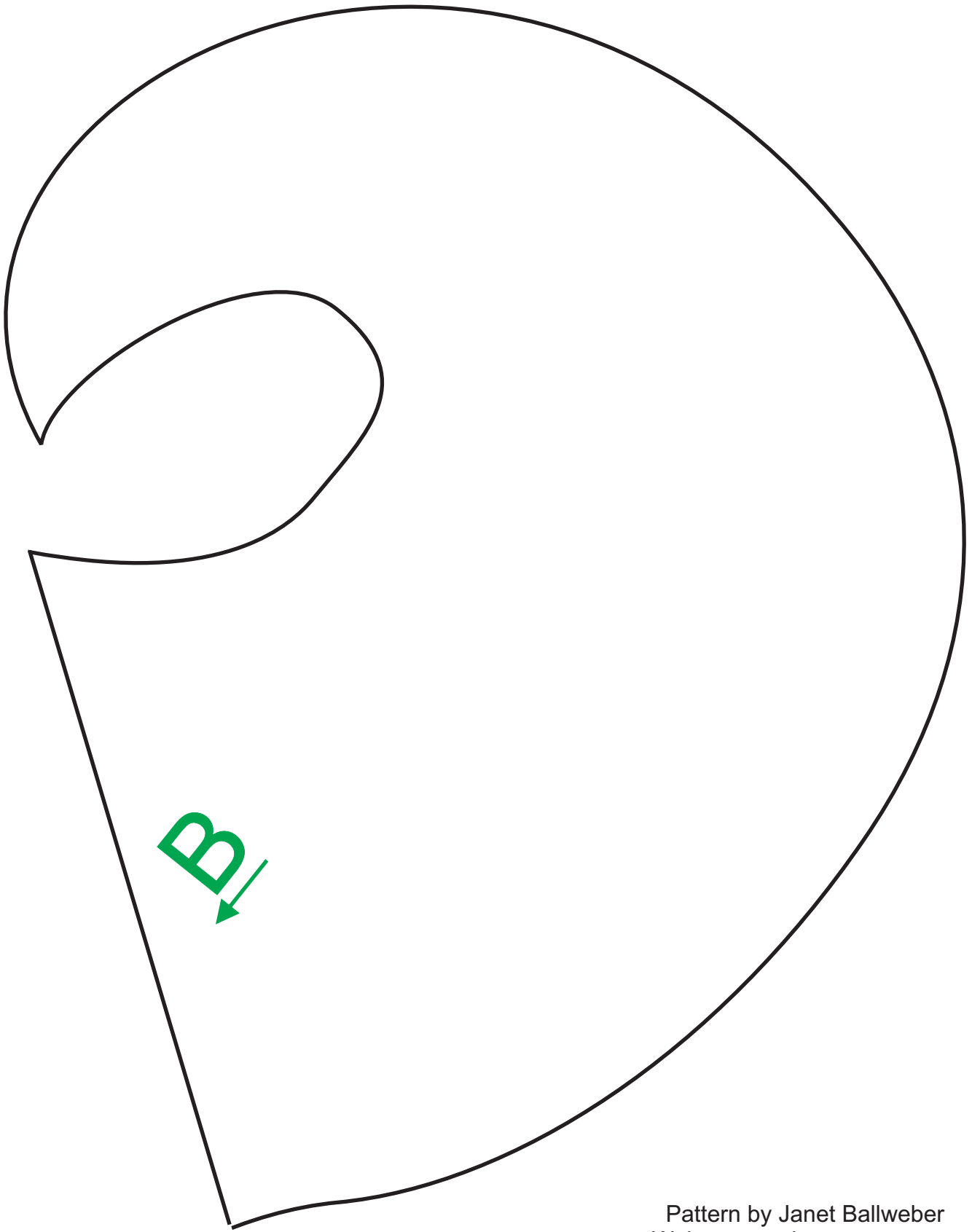
A↓

Pattern by Janet Ballweber
Web: www.cyberseams.com
Copyright 2007



A↑

B↑



Pattern by Janet Ballweber
Web: www.cyberseams.com
Copyright 2007