

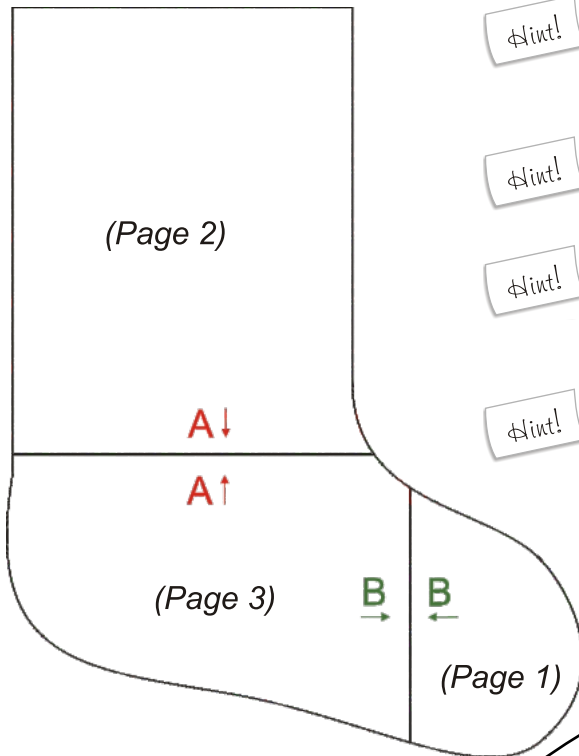
Basic Christmas Stocking

Directions:

This pattern is formatted to be printed on letter size paper.

A ½ inch (1.3 cm) seam allowance is included in the pattern.

To assemble the paper pattern, cut out each piece and tape it together, matching the “A” lines together and the “B” lines together. Your pattern will look like this:



Hint!

You can lengthen or shorten your pattern by cutting the top piece shorter or adding paper to it to lengthen it.

Hint!

Remember to clip the curves to avoid puckering

Hint!

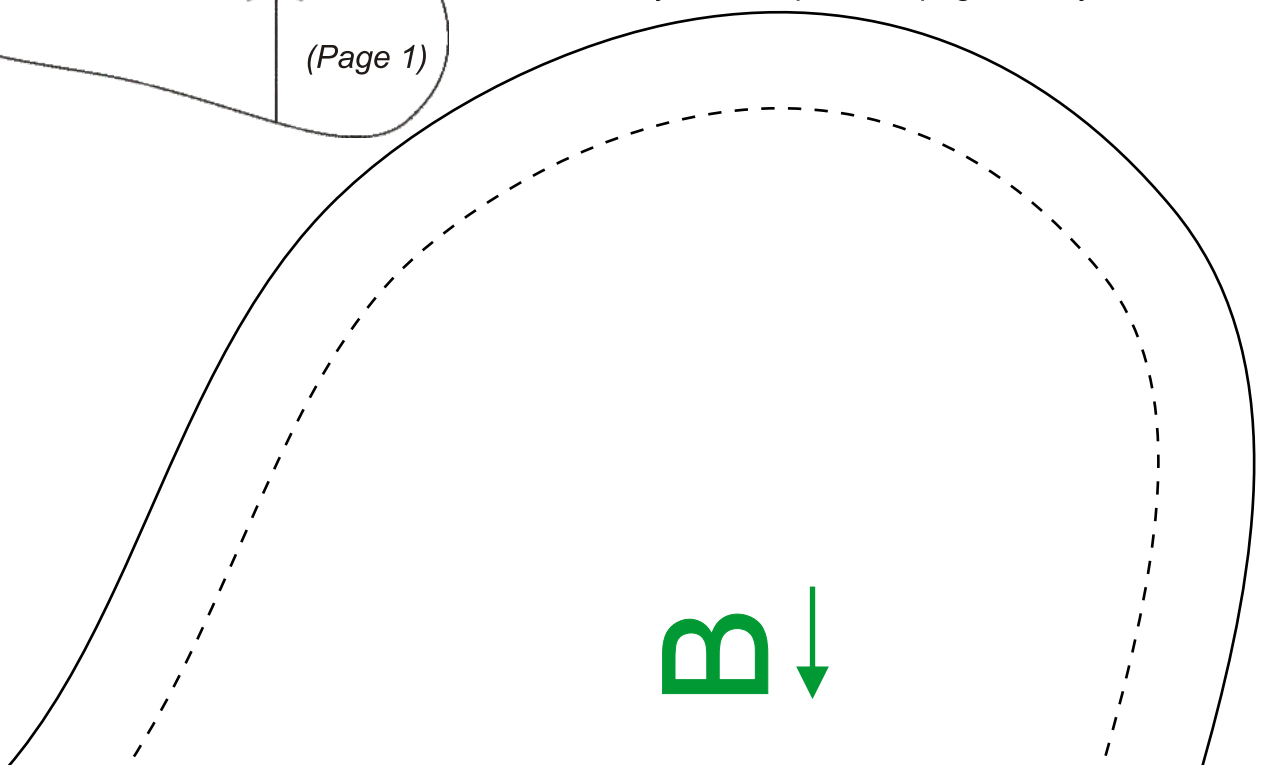
If you're using a fabric with a direction to it, such as velvet, make sure the nap is running in the direction you want it to. Usually, the “hairs” of the velvet are pointed downwards.

Hint!

An optional cuff pattern is located on Pages 4 and 5!

There are two **styles** of cuffs included, and also two **sizes** of cuffs included. The one on pg 4 will work better will bulkier fabrics. The one on pg 5 will work best with thinner fabrics.

You only need to print the pages that you need.



Basic Christmas Stocking

½ inch (1.3 cm) seam allowance



Attach hanging loop here

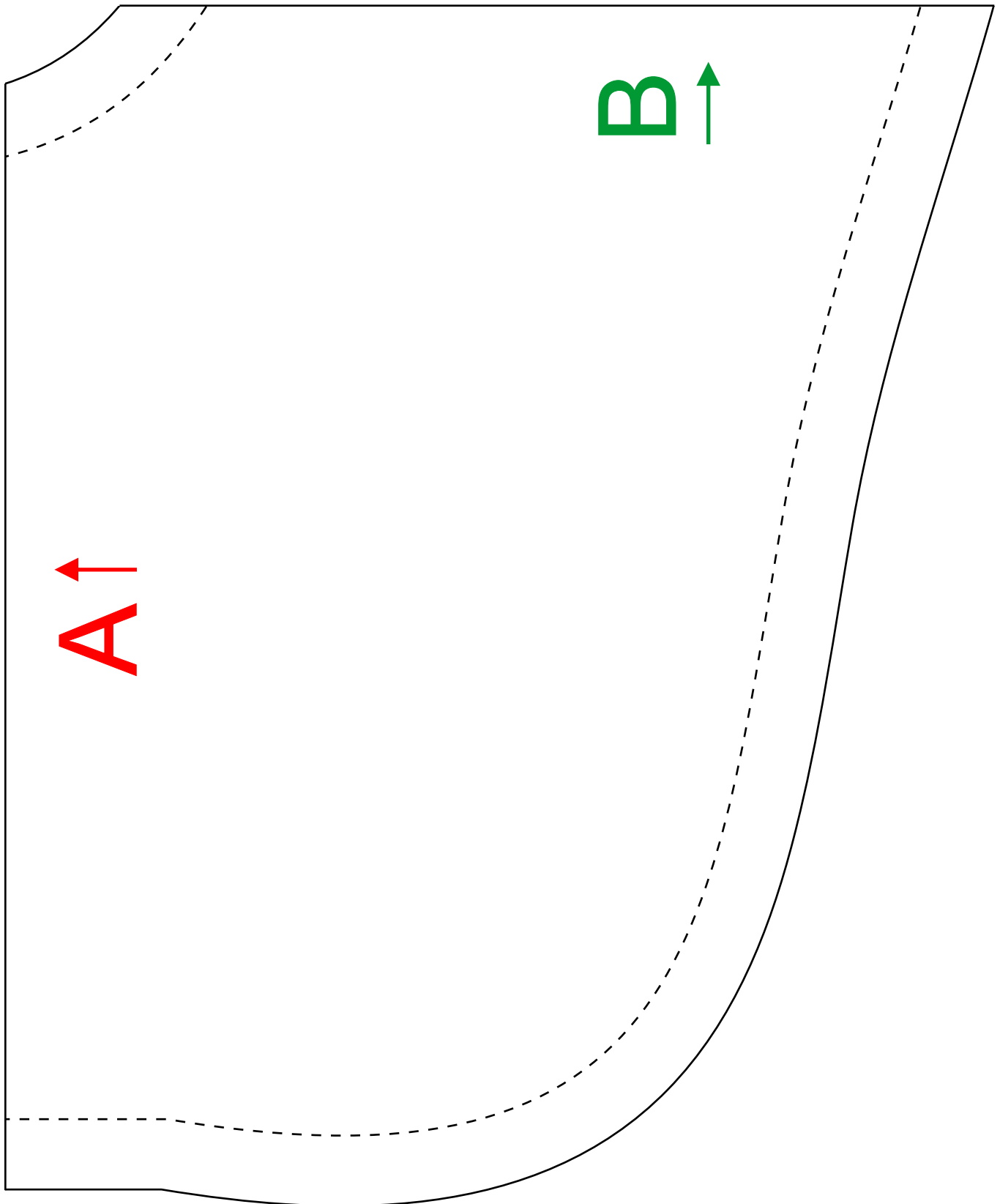
Stocking

Fabric: Cut 2
Interfacing: Cut 2
Lining: Cut 2

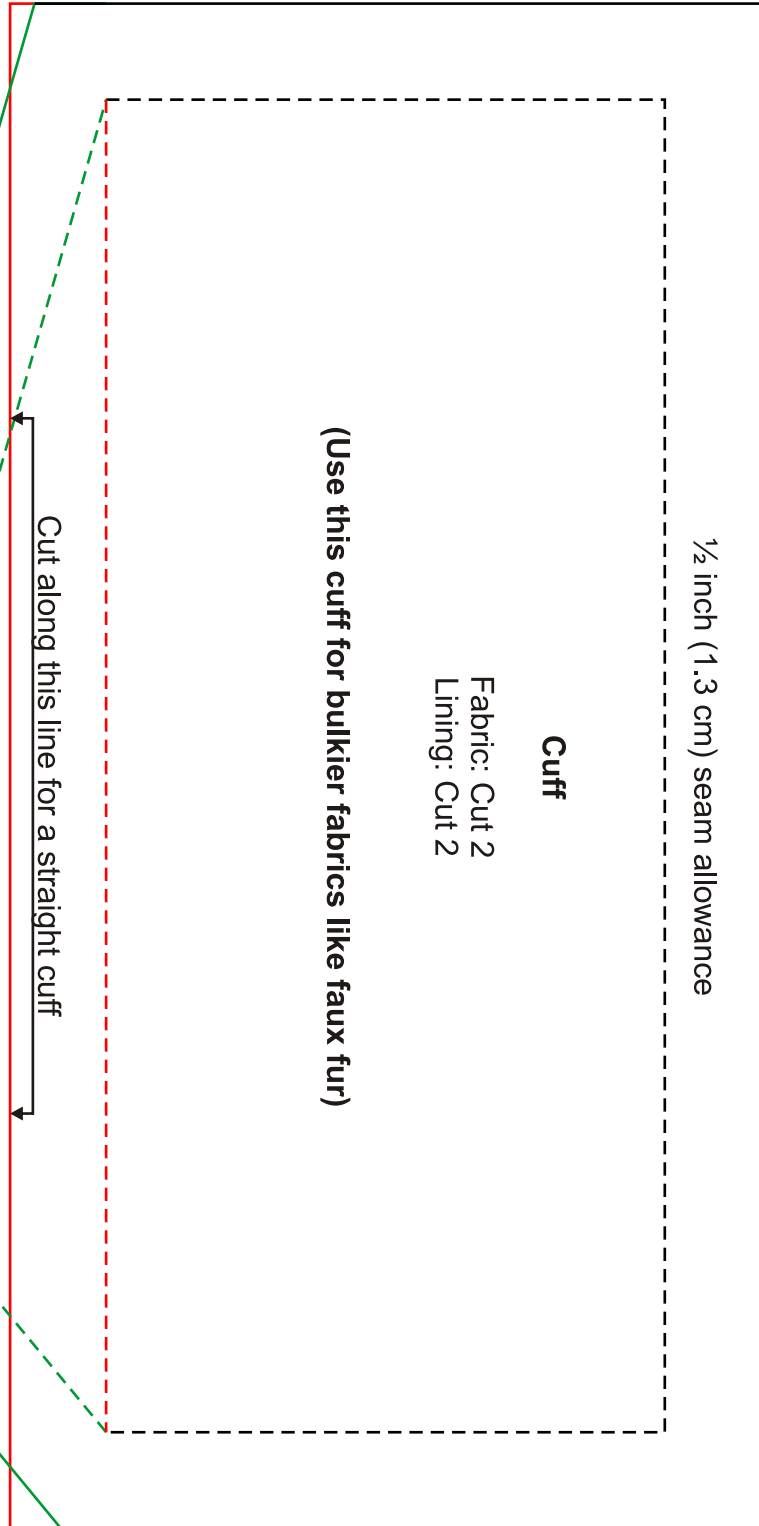
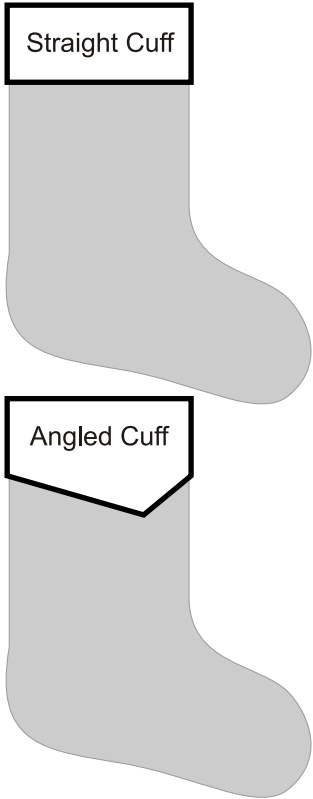
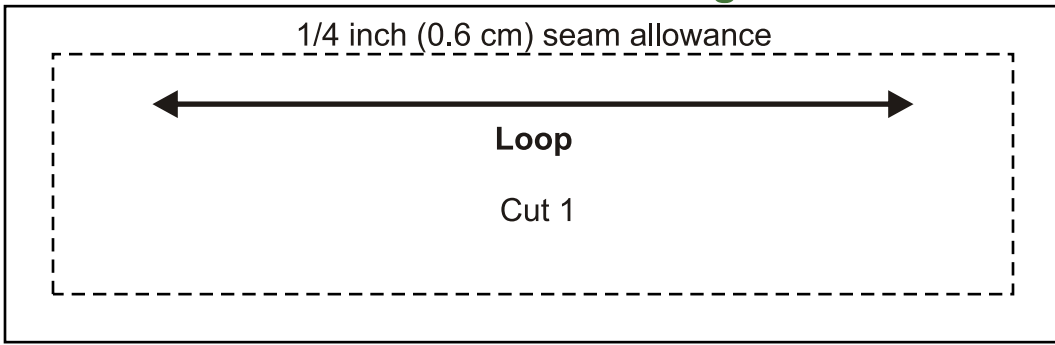
Grain Line



Basic Christmas Stocking



Basic Christmas Stocking - Cuff



½ inch (1.3 cm) seam allowance

Cuff

Fabric: Cut 2
Lining: Cut 2

(Use this cuff for thinner fabrics like cotton broadcloth)

